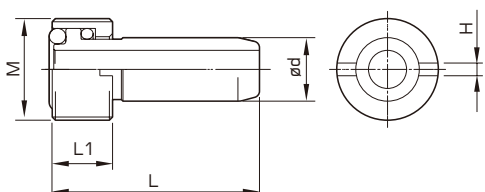


# 螺栓 BOLT

## 中心出水管 應用於 HSK 刀把

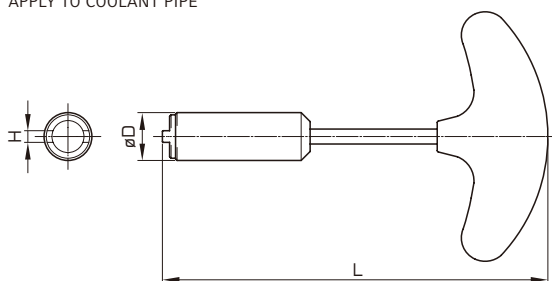
COOLANT PIPE  
APPLY TO HSK SHANK  
TOOL HOLDER



Order No. 訂購編號	M	ød	L	L1	H
HSK32P	M10xP1.0	6	25.5	5.4	2.5
HSK40P	M12xP1.0	8	29.4	7.5	3
HSK50P	M16xP1.0	10	32.6	9.5	4
HSK63P	M18xP1.0	12	36.2	10.4	5
HSK100P	M24xP1.5	16	44	15.4	6

## 扳手 應用於中心出水管

SPANNER  
APPLY TO COOLANT PIPE



Order No. 訂購編號	L	ød	H
PHS-HSK32P	123.5	13	2.4
PHS-HSK40P	127.4	13	2.9
PHS-HSK50P	128.9	16	3.9
PHS-HSK63P	132.4	18	4.9
PHS-HSK100P	180.4	22	5.9

SPARE PARTS

## 鎖緊螺栓

應用於 FMA, FMB 刀把

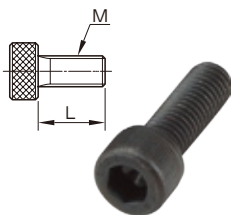
BOLT APPLY TO FMA, FMB HOLDER

## 鎖緊螺絲

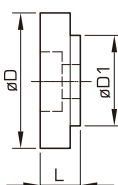
應用於 SLE 刀把

SET SCREW  
APPLY TO SLE HOLDER

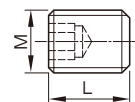
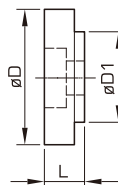
共用螺栓  
Bolt



FMA 止  
Spacer Ring



FMB 止  
Spacer Ring



Order No. 訂購編號	L	Order No. 訂購編號	L	øD	øD1	適用螺栓
M18x1.25	25	FMSP-25.4	16	33	25.4	M12X1.75
M10x1.5	25	FMSP-31.75	20	40	31.75	M16X2
M12x1.75	30	FMSP-38.1	25	50	38.1	M20X2.5
M16x2	35					
M20x2.5	40					

Order No. 訂購編號	L	øD	øD1	適用螺栓
FMSP-16	12	20	16	M18X1.25
FMSP-22	15	28	22	M10X1.5
FMSP-27	16	33	27	M12X1.75
FMSP-32	20	40	32	M16X2
FMSP-40	25	50	40	M20X2.5

Order No. 訂購編號	L	M
SLA-M6	10	M6xP1.0
SLA-M8	10	M8xP1.25
SLA-M10	12	M10xP1.5
SLA-M12	16	M12xP1.75
SLA-M16	16	M16xP2.0
SLA-M20	20	M20xM2.5