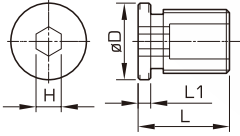


# SPARE PARTS

## 螺栓 BOLT

### 調整螺絲 應用於油壓 (HY) 刀把

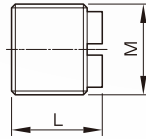
ADJUST SCREW  
APPLY TO HY HOLDER



Order No. 訂購編號	L	L1	øD	H
HY06-M5	14.5	2	6	2.5
HY08-M6	14.5	2	8	2.5
HY14-M8	14.5	2	11.5	4
HY18-M12	14.5	2	15.5	4
HY25-M16	14.5	2	24.5	4

### 調整螺絲 應用於ER刀把

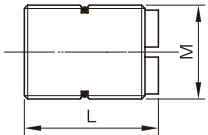
ADJUST SCREW  
APPLY TO ER HOLDER



Order No. 訂購編號	L	M
ER-M8	10	M8x1.0
ER-M11	12	M11x1.0
ER-M14	12	M14x1.0
ER-M18	12	M18x1.5
ER-M22	12	M22x1.5
ER-M28	12	M28x1.5
ER-M36	12	M36x1.5

### 出水型調整螺絲 應用於 ER刀把

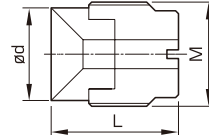
COLLANT TYPE SCREW  
APPLY TO ER HOLDER



Order No. 訂購編號	L	M
ER-M8C	20	M8x1.0
ER-M11C	20	M11x1.0
ER-M14C	20	M14x1.0
ER-M18C	20	M18x1.5
ER-M22C	20	M22x1.5
ER-M28C	20	M28x1.5
ER-M36C	20	M36x1.5

### 出水型調整螺絲 應用於 PFC刀把

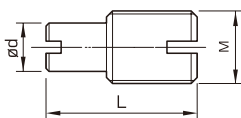
COOLANT TYPE SCREW  
APPLY TO PFC HOLDER



Order No. 訂購編號	ød	L	M
PFC20-M18C	16	22	M8x1.5
PFC25-M22C	20	27	M22x1.5
PFC32-M28C	26	32	M28x1.5

### 調整螺絲 應用於 PFK刀把

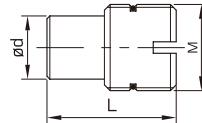
ADJUST SCREW  
APPLY TO PFK HOLDER



Order No. 訂購編號	ød	L	M
PFK-M8	6	25	M8x1.0
PFK-M12	8	25	M12x1.0
PFK-M18	14	33	M18x1.5
PFK-M28	24	30	M28x1.5

### 出水型調整螺絲 應用於 PFK刀把

COOLANT TYPE SCREW  
APPLY TO PFK HOLDER



Order No. 訂購編號	ød	L	M
PFK-M8C	6	25	M8x1.0
PFK-M12C	8	25	M12x1.0
PFK-M18C	14	33	M18x1.5
PFK-M28C	24	30	M28x1.5