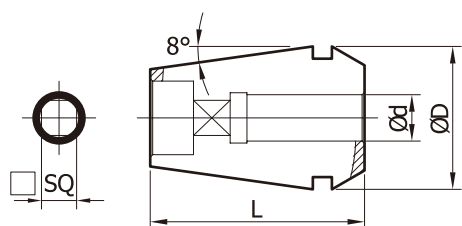


# ER 攻牙筒夾 (英制)

## ER Tap Collet (inch)



MODEL	øD	L	ød	□ SQ	TAP	STD	訂購編號 Order No.
ER16	17	27	6	4.5	1/4"U	JIS	ER16-6x4.5
			6.1	5	5/16"U		ER16-6.1x5
			7	5.5	3/8"U		ER16-7x5.5
			8	6.2	7/16"U		ER16-8x6.2

MODEL	øD	L	ød	□ SQ	TAP	STD	訂購編號 Order No.
ER20	21	31	6	4.5	1/4"U	JIS	ER20-6x4.5
			6.1	5	5/16"U		ER20-6.1x5
			7	5.5	3/8"U		ER20-7x5.5
			8	6.2	7/16"U		ER20-8x6.2
			9	7.1	1/2"U		ER20-9x7.1

MODEL	øD	L	ød	□ SQ	TAP	STD	訂購編號 Order No.
ER25	26	35	6	4.5	1/4"U	JIS	ER25-6x4.5
			6.1	5	5/16"U		ER25-6.1x5
			7	5.5	3/8"U		ER25-7x5.5
			8	6.2	7/16"U		ER25-8x6.2
			9	7.1	1/2"U		ER25-9x7.1
			10.5	8	9/16"U		ER25-10.5x8
			12	9	5/8"U		ER25-12x9

MODEL	øD	L	ød	□ SQ	TAP	STD	訂購編號 Order No.
ER32	33	40	6	4.5	1/4"U	JIS	ER32-6x4.5
			6.1	5	5/16"U		ER32-6.1x5
			7	5.5	3/8"U		ER32-7x5.5
			8	6.2	7/16"U		ER32-8x6.2
			9	7.1	1/2"U		ER32-9x7.1
			10.5	8	9/16"U		ER32-10.5x8
			12	9	5/8"U		ER32-12x9
			14	11	3/4"U		ER32-14x11
			17	13	7/8"U		ER32-17x13

MODEL	øD	L	ød	□ SQ	TAP	STD	訂購編號 Order No.
ER40	41	46	6	4.5	1/4"U	JIS	ER40-6x4.5
			6.1	5	5/16"U		ER40-6.1x5
			7	5.5	3/8"U		ER40-7x5.5
			8	6.2	7/16"U		ER40-8x6.2
			9	7.1	1/2"U		ER40-9x7.1
			10.5	8	9/16"U		ER40-10.5x8
			12	9	5/8"U		ER40-12x9
			14	11	3/4"U		ER40-14x11
			17	13	7/8"U		ER40-17x13
			20	15	1"U		ER40-20x15

COLLET