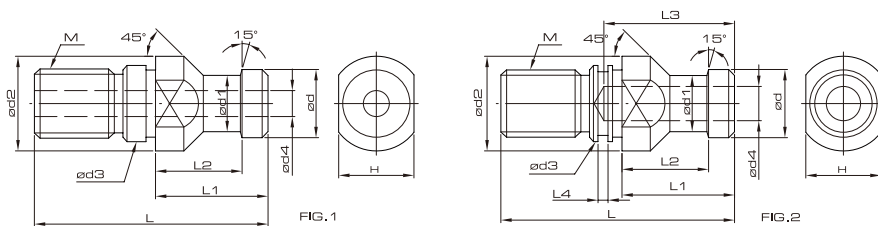


拉桿 PULL STUD



DIN拉桿螺栓規格 DIN 69872 Type A 及 Type B



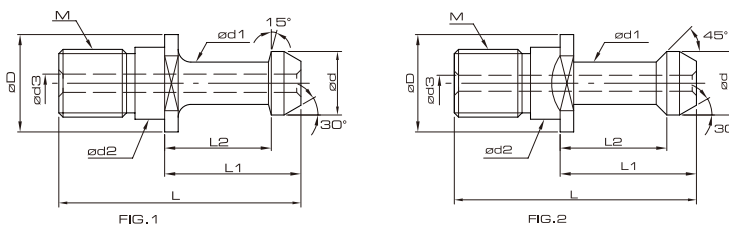
Order No.

訂購編號	FIG	ød	ød1	ød2	ød3	ød4	L	L1	L2	L3	L4	H	M
PSD-PD30T-A3	1	13	9	17	13	-	44	24	19	-	-	14	M12xP1.75
PSD-PD30T-BR3	2	13	9	17	13	-	44	24	19	-	1.4	14	M12xP1.75
PSD-PD40T-A3	1	19	14	23	17	7	54	26	20	-	-	19	M16xP2.0
PSD-PD40T-BR2	2	19	14	23	17	7	54	26	20	27	1.9	19	M16xP2.0
PSD-PD40T-BR3	2	19	14	23	17	7	54	26	20	27	1.9	19	M16xP2.0
PSD-PD50T-A3	1	28	21	36	25	11.5	74	34	25	-	-	30	M24xP3.0
PSD-PD50T-BR3	2	28	21	36	25	11.5	74	34	25	37	3	30	M24xP3.0

• 訂購編號末碼數字表示：2- 普慧製，3- 台製



ISO拉桿螺栓規格 ISO 7388/2



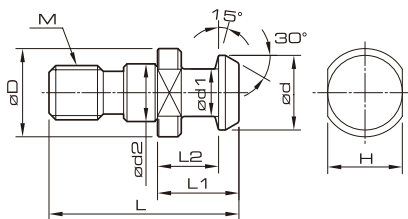
Order No.

訂購編號	FIG	øD	ød	ød1	ød2	ød3	L	L1	L2	M
PSD-ISO40-A3	1	23	19	14	17	7	54	26	20	M16xP2.0
PSD-ISO40-B3	2	22.5	18.95	12.95	17	7.35	44.5	16.4	11.15	M16xP2.0
PSD-ISO50-A3	1	36	28	21	25	11.5	74	34	25	M24xP3.0
PSD-ISO50-B3	2	37	29.1	19.6	25	11.55	65.5	25.55	17.95	M24xP3.0

• 訂購編號末碼數字表示：2- 普慧製，3- 台製



ISO(雕刻機用) 拉桿螺栓規格 PULL STUD TYPE ISO (For Engraving Machine)



Order No.

訂購編號	øD	ød	ød1	ød2	L	L1	L2	H	M
PSD-PI20T-42	11.4	9	6	8.5	26	12	9	10	M8xP1.25
PSD-PI25T-42	12	10	7	9	32	16	11.6	10	M8xP1.25
PSD-PI30T-42	17	13	9	13	45	24	19	14	M12xP1.75

• 訂購編號末碼數字表示：2- 普慧製，3- 台製