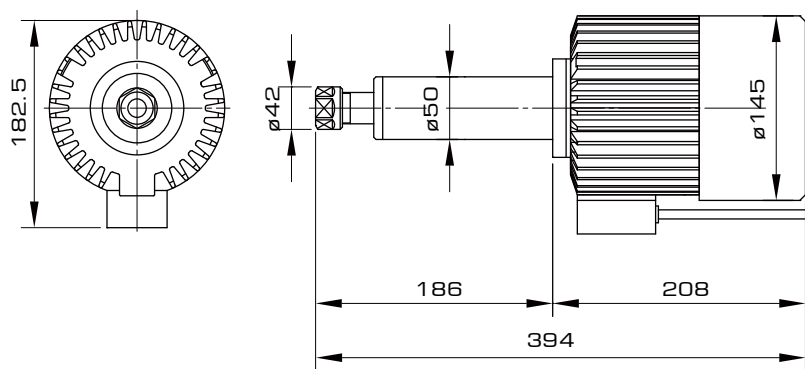


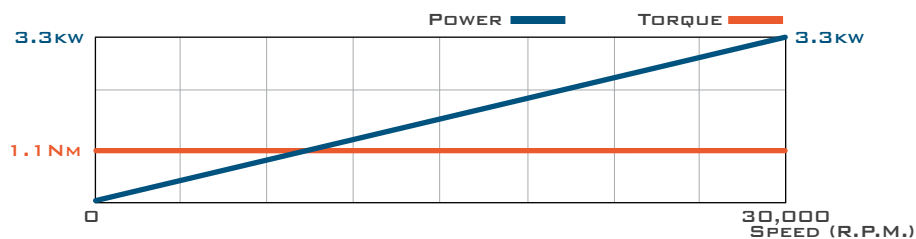
## PRECISION ELECTRO SPINDLE

(Air Cooling)



E0533-30

### TORQUE AND POWER CURVE



### SPECIFICATIONS

| 項目                           | 內容   |
|------------------------------|--|
| 安裝方式 Installation Position   | 立式 / 臥式 Vert / Horiz                       |
| 轉速 Speed / rpm               | 15,000~30,000 rpm                          |
| 頻率 Frequency / Hz            | 500 Hz                                     |
| 軸承 Ball Type                 | 鋼珠 Steel Ball                              |
| 軸承潤滑方式 Bearing Lubrication   | 滑脂 Grease                                  |
| 電壓 Voltage / V               | 220 V                                      |
| 功率 Power / KW                | 3.3 Kw                                     |
| 扭力 Torque / Nm               | 1.1 Nm                                     |
| 刀把 / 筒夾 Tool Holder / Collet | ER25                                       |
| 刀具夾持柄 Tool dia / mm          | ø1-ø16                                     |
| 冷卻方式 Cooling Type            | 風冷 (獨立風扇式)<br>Air (Individual Fan Cooling) |
| 主體外徑 D / mm                  | ø50 mm                                     |
| 主軸全長 L / mm                  | 394 mm                                     |
| 重量 Weight / Kg               | 10 Kg                                      |